

### 3 URGENT AND EMERGENCY BLOOD TRANSFUSION REQUESTS

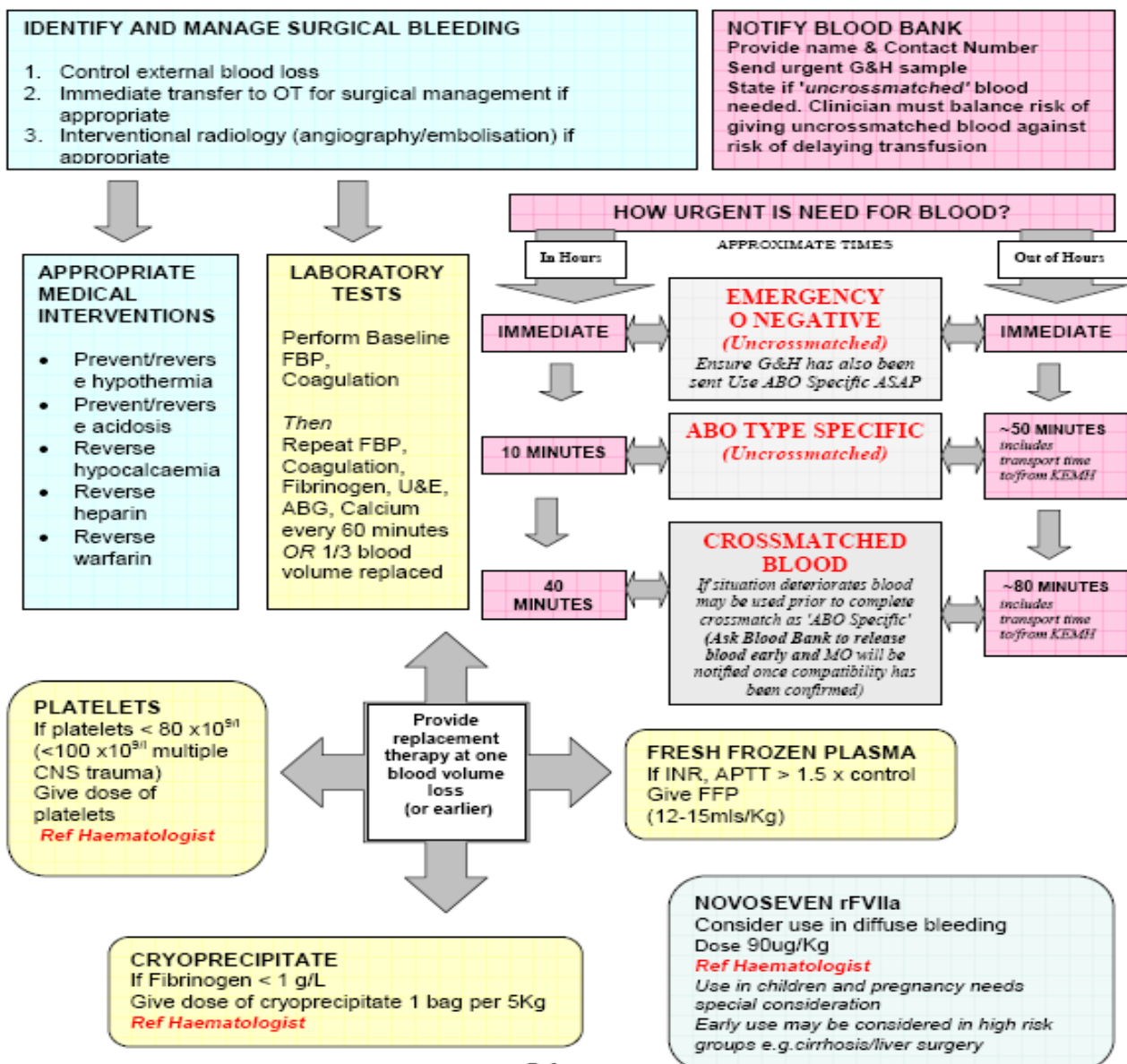
Date Issued: June 2007  
Date Revised: February 2009  
Review Date: January 2011  
Authorised by: TMU HTC  
Review Team: TMU HTC

3.4 PMH Massive Transfusion Guideline  
Section 3  
Transfusion Medicine Protocols  
CAHS WNHS  
Perth Western Australia

## MASSIVE BLOOD TRANSFUSION GUIDELINE

### Princess Margaret Hospital

Any patient who has sustained a 50% blood loss within 3 hours or a rate of loss of >2ml/Kg/min



#### References

Management of Massive Blood Loss (Template: Br J Anaesth. 2002, 85, 487 - 491) Guideline BJH 2006 135 634-641  
Guidelines for Transfusion for massive blood loss: Clin Lab Haemat 1988, 10, 265-273  
McClelland DBL (2006) The handbook of Transfusion Medicine, London HMSO